



# SF-M200D Series

## GSM/GPRS\_DTU

Data:24/6/2015



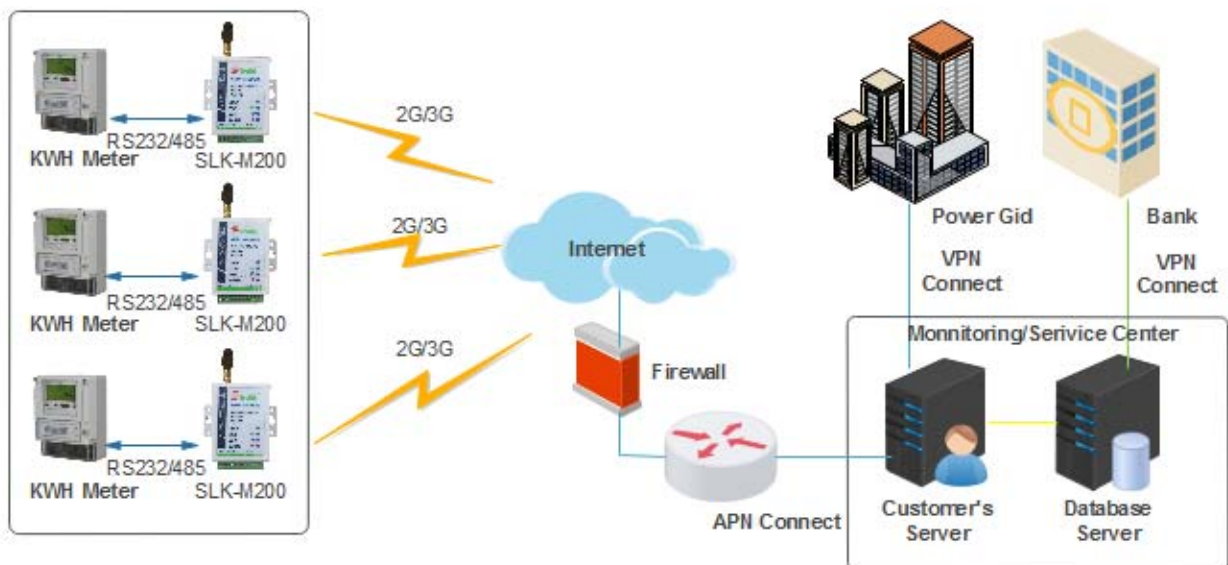
### Overview

DTU (Data Transfer unit), Is dedicated to convert serial data to IP data or converts IP data to serial data transmission through wireless communication network of wireless terminal equipment.

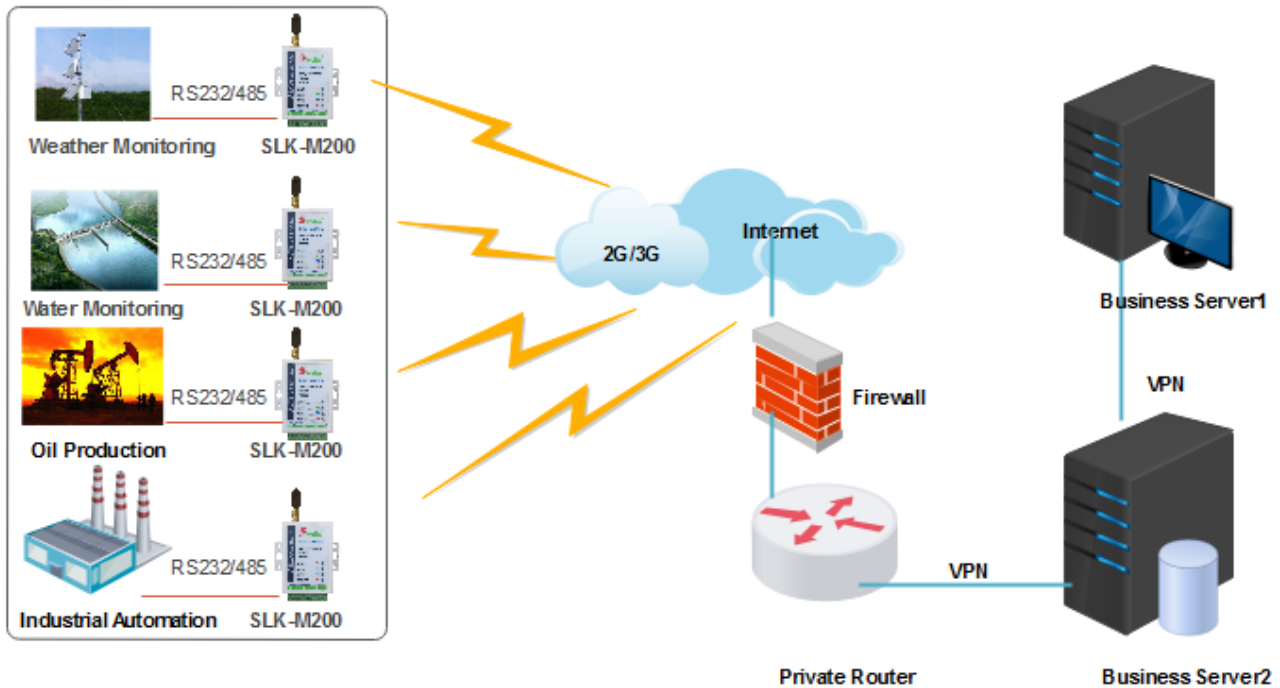
Slk-m200d series GPRS DTU adopts highly integrated, highly reliable GPRS communication module and low-power industrial-grade CPU. At the same time, the standard RS232 and RS485 interfaces are provided for user selection to meet the interface compatibility problems in different communication environments. The two serial ports also have industrial-grade protection requirements such as ESD, TVS and FUSE. In addition, you may choose whether or not you need a third standard product according to the actual needs. Wide voltage design, support dv5-28v for most industrial environment power supply.

### Applications:

**SLK-M200D DTU Application for power meter**



SLK-M200D DTU application in meteorological monitoring, water conservancy monitoring, oil exploration, industrial automation and other fields:



### Features:

- Adopting the industrial GPRS module, the signal is stable and reliable.
- Support TCPUDP full transparent mode data transmission or UDP full transparent mode data transmission.
- Design support - wide temperature 35 °C to 75 °C
- Passed the CE/RHOHS certification
- Support heartbeat pack, equipment ID identification and other industrial environment common functions.
- 5 ~ 35V DC overwide voltage support.
- The dual-serial port design also supports the rs-232 / rs-485 interface.
- Multi-data center synchronous transmission.
- It can be configured remotely via SMS.

**Parameters**

Band	
<b>2G</b>	GPRS
<b>Band</b>	Supported GSM850/900/1800/1900MHZ
Serial Port	
<b>RS232 Terminal Interface</b>	Signal: TXD,RXD,DTR,RTS,CTS,RI,DCD bps: 115200, 57600, 38400, 19200, 14400, 9600, 4800, 2400 Verification Mode: EVEN, ODD, SPACE (0), MARK (1), NONE Stop bits: 1 or 2bits
<b>RS485 Terminal Interface</b>	Signal: A,B(with TVS,ESD etc. Protection) bps: 115200, 57600, 38400, 19200, 14400, 9600, 4800, 2400 Verification Mode: EVEN, ODD, SPACE (0), MARK (1), NONE Stop bits: 1 or 2bits
Protocol support	
	Supported TCP Client, UDP work mode Supported DNS, APN setting , and two ip server address setting Supported Heartbeat packet, Device ID setting
Configuration	
	Supported AT command configuration and supply serial port tool Supported private configuration tool for configure and supported sms settings
Antenna	
	Default supply sucker antenna 3M long, and supply others type antenna
<b>Gain</b>	3db
SIM card	
<b>SIM card</b>	Supported 1.8V/3V sim card, drawer type slot
Power	
<b>Input</b>	Supported DC5~28V power in, default supply DC 12V/1A power adapter
<b>Power Consumption</b>	Standby: 260mA@12VDC
	MAX: 500mA@12VDC
	Average:320mA@12VDC
Physical Parameter	
<b>Temperature</b>	Storage Temperature: (-40°C to 85°C)
	Operating temperature: (-30°C to 70°C)
<b>RH</b>	95% Maximum (Non-condensing)
<b>Size(mm)</b>	(L x B x H):78mm x55mm x 16mm
<b>Weight</b>	item:480g
Others	
<b>Warranty</b>	5 years Warranty
<b>Package</b>	GPRS DTU, Power adapter, Sucker antenna, User manual
<b>Order Info.</b>	SLK-M200D-GPRS